

Stock Spiro Pipe

S10 - (SMACNA)

8 1/2" wide strip-Corrugated-Crimped one end-10' sections.



S10 (SMACNA) pipe is a lightweight yet very economical product used in most low pressure (2" static / water column) or less applications. Our SMACNA pipe (S10) is corrugated four times in between each spiral lockseam to increase the rigidity of the pipe. It is the lowest cost pipe we offer and it is very easy to handle and drill screws into. The consistent factory crimp eliminates the need for a coupling, reducing material and labor costs.

Size	Ga.	Part #
6"	28	S10-B-06
7"	28	S10-B-07
8"	28	S10-B-08
9"	28	S10-B-09
10"	28	S10-B-10
12"	28	S10-B-12
14"	28	S10-B-14
16"	26	S10-C-16
18"	26	S10-C-18
20"	26	S10-C-20
22"	26	S10-C-22
24"	26	S10-C-24
26"	24	S10-D-26
28"	24	S10-D-28

UMC - (Uniform Mechanical Code)

8 1/2" wide strip-Smooth-Crimped one end-10' sections
3" - 5" is a 5.394" wide strip



UMC Pipe is gauged to meet Uniform Mechanical Code for up to +2" static/water column applications.
UMC Pipe also meets or exceeds SMACNA standards up to +10" static/water column and -2" static/water column applications.
UMC pipe has a smooth finish and is factory crimped for faster installation.

* Check Branch for availability

Size	Ga.	Part #
3"	26	UMC-C-03
4"	26	UMC-C-04
5"	26	UMC-C-05
6"	26	UMC-C-06
7"	26	UMC-C-07
8"	26	UMC-C-08
9"	26	UMC-C-09
10"	26	UMC-C-10
12"	26	UMC-C-12
14"	26	UMC-C-14
16"	24	UMC-D-16
18"	24	UMC-D-18
20"	24	UMC-D-20
22"	24	UMC-D-22
24"	22	UMC-E-24
26"	22	UMC-E-26
28"	22	UMC-E-28

S - Pipe

8 1/2" wide strip - Smooth-Crimped one end - 7 1/2' sections



S-Pipe is a very lightweight product used in the lowest pressure applications (less than 1" static/water column). It is factory crimped and is a great substitute to K.D. Pipe of Aluminum

Size	Ga.	Part #
6"	28	S-B-06
7"	28	S-B-07
8"	28	S-B-08
9"	28	S-B-09
10"	28	S-B-10
12"	28	S-B-12
14"	28	S-B-14

Flex. It's 7 1/2' lengths make it easy to will call in standard pick-up trucks or transport up freight elevators.

* Check Branch for availability

16"	26	S-C-16
18"	26	S-C-18
20"	26	S-C-20
22"	26	S-C-22
24"	26	S-C-24

Stock Insulated Spiro Pipe

S - Pipe

8 1/2" wide strip-Smooth-Crimped one end-7 1/2' sections



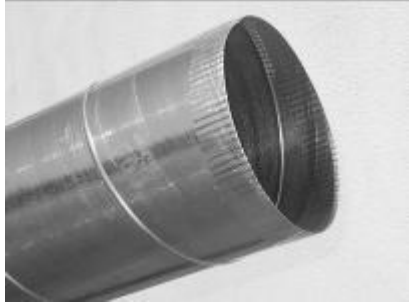
Our conventional S-Pipe product is wrapped with 1 1/2" insulation and covered with a Silver Scrim Jacket. Insulation meets R4.2 standards.

* Check Branch for availability

Size	Ga.	Silver Jacket Part #
6"	28	FS-B-06
7"	28	FS-B-07
8"	28	FS-B-08
9"	28	FS-B-09
10"	28	FS-B-10
12"	28	FS-B-12
14"	28	FS-B-14
16"	26	FS-C-16
18"	26	FS-C-18
20"	26	FS-C-20
22"	26	FS-C-22
24"	26	FS-C-24

Non-Stock Spiro Pipe

Galvanized Spiro Pipe-Available in Smooth, Corrugated or Semi-Ribbed. Crimped one end available up to 28"



30" and above will be raw both ends. Be sure to specify exact coupling count.



Size	Ga.
3" - 8"	28-20
9" - 14"	28-18
15" - 26"	26-18
28" - 36"	24-18
38" - 50"	22-18
52" - 60"	20-18

[*See Capability Chart](#)

Non-Stock Insulated Spiro Pipe

Galvanized Spiro Pipe-Available in Smooth or Corrugated
Crimped one end available up to 28"



All sizes and types of spiral pipe are available wrapped with 1 1/2" thick insulation and covered with silver jacket with UV protection from 4" through 24".

26" and above is to be wrapped with 1/2" FSK Wrap, with FSK tape and wire.

*Insulation meets R4.2 standards. Other R Values are available upon request.

Ga.	Part #
4"-8"	28-20
9"-14"	28-18
15"-26"	26-18
28"-36"	24-18
38"-50"	22-18
52"-60"	20-18

Stock Short Radius Adjustable Elbows

Standard galvanized elbows 1 to 1 centerline radius - Crimped one end



90°



45°

90° 4 Gore assembly—3”-20” 90° 5 Gore Gorelock assembly 22” & above

45° 2 Gore assembly—4”-20” 45° 3 Gore Gorelock assembly 22” & above

* Stainless steel and aluminum available upon request.

Size	Ga	90° Part #	45° Part #
3"	26	90-C-03	
4"	26	90-C-04	45-C-04
5"	26	90-C-05	45-C-05
6"	26	90-C-06	45-C-06
7"	26	90-C-07	45-C-07
8"	26	90-C-08	45-C-08
9"	26	90-C-09	45-C-09
10"	26	90-C-10	45-C-10
12"	26	90-C-12	45-C-12
14"	24	90-D-14	45-D-14
16"	24	90-D-16	45-D-16
18"	24	90-D-18	45-D-18
20"	24	90-D-20	45-D-20
22"	24	90-D-22	45-D-22
24"	24	90-D-24	45-D-24
26"	24	90-D-26	45-D-26
28"	22	90-E-28	45-E-28

Stock Long Radius Adjustable Elbows

Standard galvanized elbows-Crimped one end



90°



45°

90° 5 Gore 1 1/2 to 1 centerline radius - 4" -18 "

45° 3 Gore 1 1/2 to 1 centerline radius - 5" -18"

* Check your Omni Duct Branch Office for availability.

Size	Ga	90° Part #	45° Part #
4"	26	90LR-C-04	
5"	26	90LR-C-05	45LR-C-05
6"	26	90LR-C-06	45LR-C-06
7"	26	90LR-C-07	45LR-C-07
8"	26	90LR-C-08	45LR-C-08
9"	26	90LR-C-09	45LR-C-09
10"	26	90LR-C-10	45LR-C-10
12"	26	90LR-C-12	45LR-C-12
14"	24	90LR-D-14	45LR-D-14
16"	24	90LR-D-16	45LR-D-16
18"	24	90LR-D-18	45LR-D-18

Stock 45° T-Wyes

All T-Wyes spot welded with female/male/male ends. Available with Jiffy dampers installed.



All Wyes fabricated from galvanized steel meeting ASTM-A-653-96 standards, in accordance with the latest edition of SMACNA gauges and construction standards.

Stock T-Wyes	Stock T-Wyes	Stock T-Wyes
6x4x4*	12x10x8	16x14x8
8x6x6	12x10x10	16x14x10
8x7x7*	12x12x10	16x14x12
8x8x6	12x12x12	16x14x14
8x8x8	14x10x8*	16x16x10
10x6x6	14x10x10	16x16x12
10x8x6	14x12x8	18x14x12
10x8x8	14x12x10	18x14x14
10x10x6	14x12x12	18x16x10
10x10x8	14x14x6*	18x16x12
10x10x9*	14x14x8	18x16x14
10x10x10	14x14x10	18x16x16
12x8x8	14x14x12	18x18x10
12x9x9*	16x10x10*	20x16x16

12x10x6	16x12x10	20x18x16*
12x10x7	16x12x12	
* Check your Omni Duct Branch Office for availability.		

Stock Sleeves with Damper

Standard Galvanized Sleeves-Crimped one end



Sleeves are diameter plus 1 inches for overall length, with 1 1/2" stand off, 3/8" aluminum rod with tack welded hat sections and SB138 open end bearing. All sleeves fabricated from galvanized steel meeting ASTM-A-653-96 standards.

Size	Sleeve Ga	Damper Disc	Part #
6"	24	18	DS1.5-06
7"	24	18	DS1.5-07
8"	24	18	DS1.5-08
9"	24	18	DS1.5-09
10"	24	18	DS1.5-10
12"	24	18	DS1.5-12
14"	24	18	DS1.5-14
16"	24	18	DS1.5-16
18"	24	18	DS1.5-18

Stock Jiffy Damper Sleeves

(Sacramento Facility Only)

Standard Galvanized Sleeves-Crimped one end



Sleeves are diameter plus 2 inches for overall length. We use a Duro-Dyne RS256 Jiffy hardware. All sleeves fabricated from galvanized steel meeting ASTM-A-653-96 standards, in accordance with the latest edition of SMACNA gauges and construction standards.

Size	Ga	Part #
5"	26	DS-05
6"	26	DS-06
7"	26	DS-07
8"	26	DS-08
9"	26	DS-09
10"	26	DS-10
12"	26	DS-12
14"	26	DS-14
16"	24	DS-16
18"	24	DS-18

Stock 3 Piece Reducers

6" plus 3" collars, with female/male ends



All Reducers fabricated from galvanized steel meeting ASTM-A-653-96 standards, in accordance with the latest edition of SMACNA gauges and construction standards.

Size	Ga	Part #	Size	Ga	Part #
6x4	26	R06-C-0604*	14x8	26	R06-C-1408
6x5	26	R06-C-0605	14x9	26	R06-C-1409*
8x6	26	R06-C-0806	14x10	26	R06-C-1410
8x7	26	R06-C-0807	14x12	26	R06-C-1412
9x7	26	R06-C-0907*	16x10	24	R06-D-1610
9x8	26	R06-C-0908	16x12	24	R06-D-1612
10x6	26	R06-C-1006	16x14	24	R06-D-1614
10x7	26	R06-C-1007*	18x14	24	R06-D-1814
10x8	26	R06-C-1008	18x16	24	R06-D-1816
10x9	26	R06-C-1009	20x16	24	R06-D-2016
12x8	26	R06-C-1208	20x18	24	R06-D-2018
12x9	26	R06-C-1209*	22x20	24	R06-D-2220
12x10	26	R06-C-1210	24x22	24	R06-D-2422
* Check your Omni Duct Branch Office for availability.					

Stock Pancake Tapers

4" High Pancake Tapers - Crimped on small end

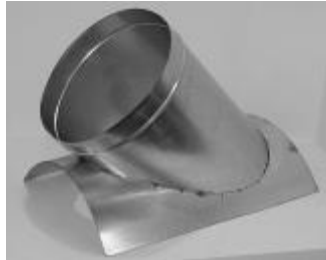


All Pancake tapers fabricated from galvanized steel meeting ASTM-A-653-96 standards.

Size	Ga	Part #
8x6	26	PT-A-0806
8x7	26	PT-A-0807
10x8	26	PT-A-1008
10x9	26	PT-A-1009
12x8	26	PT-A-1208
12x9	26	PT-A-1209
12x10	26	PT-A-1210
14x10	26	PT-A-1410
14x12	26	PT-A-1412

Stock Saddle Taps on Round

45° Stock Saddle Tap on round, spot welded

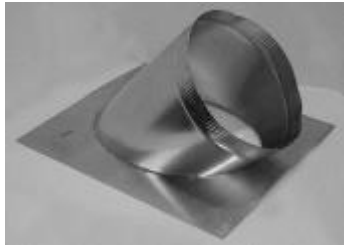


All Saddle Taps fabricated from galvanized steel meeting ASTM-A-653-96 standards, in accordance with the latest edition of SMACNA gauges and construction standards.

Size	Ga	Part #	Size	Ga	Part #
6 on 10 *	26	STCR45-C-0610	12 on 18 *	26	STCR45-C-1218
8 on 10	26	STCR45-C-0810	14 on 16 *	26	STCR45-C-1416
8 on 14	26	STCR45-C-0814	14 on 18 *	26	STCR45-C-1418
8 on 16 *	26	STCR45-C-0816	14 on 20 *	26	STCR45-C-1420
10 on 12	26	STCR45-C-1012	16 on 18 *	24	STCR45-D-1618
10 on 14 *	26	STCR45-C-1014	16 on 20 *	24	STCR45-D-1620
10 on 16	26	STCR45-C-1016	16 on 24 *	24	STCR45-D-1624
12 on 14	26	STCR45-C-1214	18 on 20 *	24	STCR45-D-1820
12 on 16	26	STCR45-C-1216	18 on 24 *	24	STCR45-D-1824
* Check your Omni Duct Branch Office for availability.					

Stock Saddle Taps on Flat

45° Stock Saddle Tap on flat, spot welded



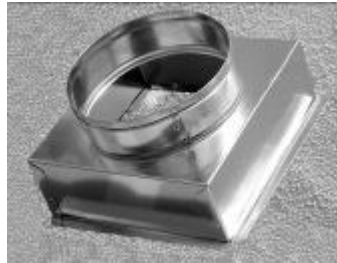
All Saddle Taps fabricated from galvanized steel meeting ASTM-A-653-96 standards, in accordance with the latest edition of SMACNA gauges and construction standards.

* Check your Omni Duct Branch Office for availability.

Size	Ga	Part #
6"	26	STCF45-C-06
8"	26	STCF45-C-08
10"	26	STCF45-C-10
12"	26	STCF45-C-12
14"	26	STCF45-C-14
16" *	24	STCF45-D-16
18" *	24	STCF45-D-18

Stock Ceiling Boxes

Top feed ceiling boxes, 4" high can plus 3" collar with plaster ground



Size	Ga.	Part #	Size	Ga.	Part #
6x6x5*	26	CB-060605	12x12x10	26	CB-121210
6x6x6	26	CB-060606	12x12x12	26	CB-121212
8x8x6	26	CB-080806	14x14x10	26	CB-141410
8x8x7*	26	CB-080807	14x14x12	26	CB-141412
8x8x8	26	CB-080808	14x14x14	26	CB-141414
10x10x6	26	CB-101006	16x16x12*	26	CB-161612
10x10x8	26	CB-101008	16x16x14	26	CB-161614
10x10x10	26	CB-101010	18x18x12	24	CB-181812
12x12x6	26	CB-121206	18x18x14	24	CB-181814
12x12x8	26	CB-121208	18x18x16	24	CB-181816
12x12x9*	26	CB-121209	20x20x16	24	CB-202016
* Check your Omni Duct Branch Office for availability.					

All Ceiling Boxes fabricated from galvanized steel meeting ASTM-A-653-96 standards, in accordance with the latest edition of SMACNA gauges and construction standards.

Stock T - Tops - Flashings

All pitch T-Tops and Flashing 6” high with 6” skirt



T-Top



Flashing

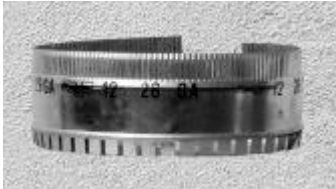
All T-Tops & Flashing fabricated from galvanized steel meeting ASTM-A-653-96 standards, in accordance with the latest edition of SMACNA gauges and construction standards.

Size	Ga	Part #
4"	26	T-TOP4"
7"	26	T-TOP7"

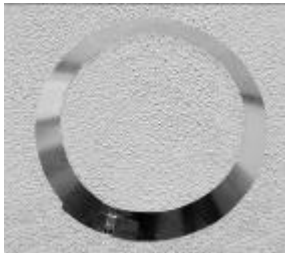
Size	Ga.	Part #
5"	26	F5
6"	26	F6
7"	26	F7
8"	26	F8
9"	26	F9
10"	26	F10
12"	26	F12
14"	26	F14
16"	26	F16
18"	26	F18
20"	26	F20

Stock Dovetail Start Collars - Storm Collars

Dovetail Start Collars 5" high with crimp-Storm Collars with clip



Start Collar



Storm Collar

All Start & Storm Collars fabricated from galvanized steel meeting ASTM-A-653-96 standards, in accordance with the latest edition of SMACNA gauges and construction standards.

Size	Ga	Start Collar Part #	Storm Collar Part #
4"	26	SC-04	
5"	26	SC-05	SC5
6"	26	SC-06	SC6
7"	26	SC-07	SC7
8"	26	SC-08	SC8
9"	26	SC-09	SC9
10"	26	SC-10	SC10
12"	26	SC-12	SC12
14"	26	SC-14	SC14
16"	26	SC-16	SC16
18"	26	SC-18	SC18
20"	26	SC-20	
22"	26	SC-22	
24"	26	SC-24	
26"	26	SC-26	

Stock Air Tite Start Collars

6" high with 1 1/2" ring-Crimped one end



All Air Tite Start Collars fabricated from 26 gauge galvanized steel with spot welded seams along with adhesive gasket material on flange.

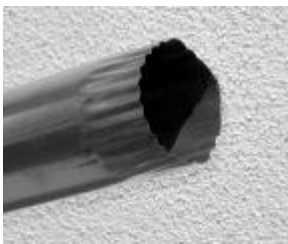
Size	Ga	Part #
6"	26	ATSC-06
7"	26	ATSC-07
8"	26	ATSC-08
9"	26	ATSC-09
10"	26	ATSC-10
12"	26	ATSC-12
14"	26	ATSC-14
16"	26	ATSC-16
18"	26	ATSC-18
20"	26	ATSC-20

Stock KD Pipe - Conductor Pipe

Button lock (KD) Pipe available in 3' sections -
Crimped one end



KD Pipe



Conductor Pipe

All KD & Conductor Pipe fabricated from galvanized steel meeting ASTM-A-653-96 standards, in accordance with the latest edition of SMACNA gauges and construction standards.

Size	Ga	Part #
4"x3'	26	BL-C-04
5"x3'	26	BL-C-05
6"x3'	26	BL-C-06
7"x3'	26	BL-C-07
8"x3'	26	BL-C-08
9"x3'	26	BL-C-09
10"x3'	26	BL-C-10
12"x3'	26	BL-C-12
14"x3'	24	BL-D-14
16"x3'	24	BL-D-16
18"x3'	24	BL-D-18
20"x3'	24	BL-D-20
22"x3'	24	BL-D-22
24"x3'	24	BL-D-24
26"x3'	24	BL-D-26

* 5' Stock KD available in Sacramento Facility 4"-14" only

Size	Ga.	Part #
3"x10'	26	3" Cond. Pipe
4"x10'	26	4" Cond. Pipe

Stock End Caps - Eyebrows

Male End Caps 2" high - Eyebrows with birdscreen and back draft dampers



End Cap



Eyebrow

Size	Ga	Part #
5"	26	EC-C-05
6"	26	EC-C-06
7"	26	EC-C-07
8"	26	EC-C-08
9"	26	EC-C-09
10"	26	EC-C-10
12"	26	EC-C-12
14"	24	EC-D-14
16"	24	EC-D-16
18"	24	EC-D-18
20"	24	EC-D-20
22"	24	EC-D-22
24"	24	EC-D-24
26"	24	EC-D-26

All End Caps & Eyebrows fabricated from galvanized steel meeting ASTM-A-653-96 standards, in accordance with the latest edition of SMACNA gauges and construction standards.

Size	Part #
6x6	EB-0606
8x8	EBCD-0808

Circle Lined 90° - KD Pipe

Insulated Stock Short Radius Adj. Elbows, KD Pipe 3' sections - both crimped one end



C/L 90° Adj. Elbow



C/L KD Pipe

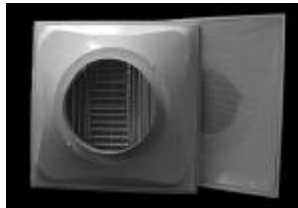
O.D. Size	Ga	Elbow Part #	KD Part #
8"	26	CL90-C-0806	CLBL-C-0806
9"	26	CL90-C-0907	CLBL-C-0907
10"	26	CL90-C-1008	CLBL-C-1008
12"	26	CL90-C-1210	CLBL-C-1210
14"	24	CL90-D-1412	CLBL-D-1412
16"	24	CL90-D-1614	CLBL-D-1614
18"	24	CL90-D-1816	CLBL-D-1816

1" thick spiracoustic, is a round, preformed self supporting fiberglass insulation with an R-value of 4.3. All 90's and KD Pipe fabricated from galvanized steel meeting ASTM-A-653-96 standards, in accordance with the latest edition of SMACNA gauges and construction standards.

Stock T-Bar Lay-Ins

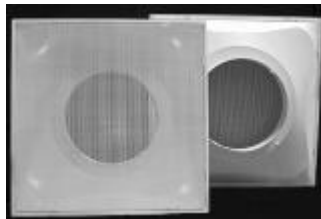
J&J T-Bar Lay-In Diffusers

Model #1234 Perforated supply with adjustable curved-blade core round neck



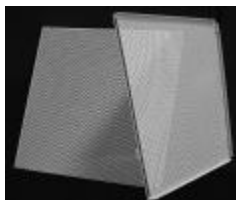
Size	Part #
6"	CBS-06
8"	CBS-08
10"	CBS-10
12"	CBS-12
14"	CBS-14

Model # 1230 Perforated return round neck



Size	Part #
6"	RA-06
8"	RA-08
10"	RA-10
12"	RA-12
14"	RA-14

Model # 1274 Perforated screen face only turned-up edges

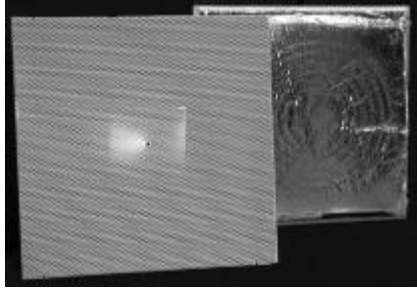


Size	Part #
24x24	SCREEN 2x2

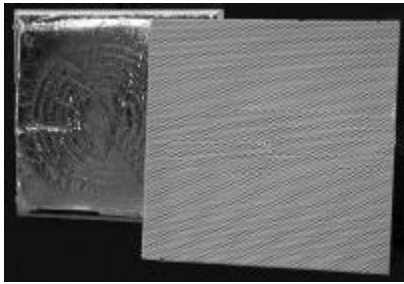
*Call for availability in our Sacramento facility

Model # 4235 Supply molded fiberglass back

Size	Part #
24x24	PS2424 Supply



Model # 4230 Return molded fiberglass back



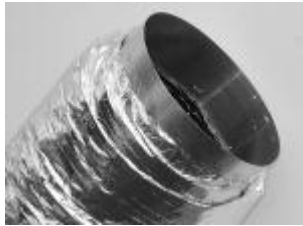
Size	Part #
24x24	ODS Return 2x2

Stock Flex Duct

Foil Faced Flexible duct 25' raw & 6' with collars



SAF25'



SAF6'

Atco Flex with a durable scuff resistant foil jacket, 1 1/2" thick blanket of fiberglass insulation, fiberglass threaded mesh, full internal poly liner which completely shields the air flow from fiberglass erosion and encapsulated, galvanized coated, hard drawn spring wire.

R-Value 6.0, UL-181 Class Air Duct, NFPA 90A and 90B

Size	SAF25' Part #	SAF6' Part #
5"	SAF25-05	SAF6-05
6"	SAF25-06	SAF6-06
7"	SAF25-07	SAF6-07
8"	SAF25-08	SAF6-08
9"	SAF25-09	SAF6-09
10"	SAF25-10	SAF6-10
12"	SAF25-12	SAF6-12
14"	SAF25-14	SAF6-14
16"	SAF25-16	SAF6-16
18"	SAF25-18	SAF6-18
20"	SAF25-20	SAF6-20

Stock Aluminum Flex Duct

6' with collars



OFD Bare



OFD Silver Jacket Wrapped

Aluminum Flex with a durable scuff resistant polyethylene jacket and silver jacket with a 1 1/2" thick blanket of fiberglass insulation.

R-Value 6.0, UL-181 Class Air Duct, NFPA 90A and 90B

Size	OFD Bare Part #	OFD Silver Jacket Part #
5"	OFD1-05	OFD3-05
6"	OFD1-06	OFD3-06
7"	OFD1-07	OFD3-07
8"	OFD1-08	OFD3-08
9"	OFD1-09	OFD3-09
10"	OFD1-10	OFD3-10
12"	OFD1-12	OFD3-12
14"	OFD1-14	OFD3-14
16"	OFD1-16	OFD3-16
18"	OFD1-18	OFD3-18

Bare 10' Raw

Size	Part #
3"	OFD110R-03
4"	OFD110R-04

Stock Showroom Accessories



Access Doors

Angle Iron

Baron Wire

Blast Gates

Cargo Nets

Damper Hardware

Draw Bands

Duct Sealer

Flagging Tape

Ramset

Duro Dyne Screws/Tools

Pin/Clip Wire

Hanger Strap

Hanger Wire / Eye Lags / Tiewire

Hardcast Adhesive

Job Folders

Malco Products - Tools

3M Products (Mask, Metal Sealant)

Polyken Duct Tape

Spray Paint

Super Strut / Nuts and Bolts

Makita Tools - *Check on Availability*

For any items not listed above please call (888) 444-3828

Spiral Capabilities



Semi-Ribbed

5.394" width



Corrugated

8.5" width



Smooth

8.5" width

Pipe Diameter	Spiral Gauge	Metal Width	Seam Type	Metal Type
6"-28"	28-22	8.5"	Corrugated/Smooth	Galvanized
6"-60"	26-18	5.394"	Smooth/Semi-Ribbed	Galvanized/Paintlock
4"-20"	0.032	5.394"	Smooth	Aluminum 3003H14
21"-30"	.040/.050	5.394"	Smooth	Aluminum 3003H14

- * Call on odd and smaller diameters
- * Call for details on large diameter pipe for Aluminum material
- * Spiral pipe available Raw both ends or Crimped on one end up to 28" diameter
- * Exposed projects - Customer to request 5.394" width on all pipe

Insulation Capabilities - Johns Manville and Certainteed Products

Internal:

- * Spinalcoustic Performed and Spiralcoustic Plus 1" & 1 1/2"
- * Small Groove Board -8" - 40" / Large Groove Board - 41" and above
- * Permacoat Linacoustic Standard HP and R-300, or Certainteed Toughguard R with liner adhesive and spot weld pins

External:

- * Microlite un-faced fab wrap with Poly or Silver Jacket

All end connectors available upon request

Male / Female Spiral Couplings - Galvanized, Black Iron, Stainless Steel & Aluminum

Angle Rings - Galvanized, Black Iron, Stainless Steel & Aluminum

Ductmate Spiral Mate Rings - Galvanized, Stainless Steel & Aluminum

Angle rings can be **Stitch Welded, Solid Welded** or **Vanstone Flanged** to the end of the duct & fittings.

Spiral Coupler



Angle Rings



Ductmate Spiralmate Ring



Rectangular Duct & Fittings Capabilities

Metal Type	Galvanized	Paintlock	Stainless	Aluminum
Gauges	26-10	24-10	24-12	.032-.050
Solid Welding Capabilities	16 Ga.-10 Ga.	16 Ga.-10 Ga.	16 Ga.-12 Ga.	Call for details
Seams				
Pittsburgh	26Ga.-16Ga.	26Ga.-16Ga.	24 Ga.-18 Ga.	Call for details
Snaplock	26Ga.-20Ga.	24Ga.-20Ga.	24 Ga.-22 Ga.	Call for details

Metal Type	Galvanized	Paintlock	Stainless	Aluminum
End Connections				
TDC	26Ga.-18Ga.	24Ga.-18Ga.	24Ga.-20Ga.	Call for details
S&D up to 36"	26Ga.-18Ga.	24Ga.-18Ga.	24Ga.-20Ga.	Call for details
Ductmate	26Ga.-16Ga.	24Ga.-18Ga.	24Ga.-18Ga.	Call for details
1/2" Flange Welded	16Ga.-10Ga.	16Ga.-10Ga.	16Ga.-10Ga.	Call for details

S&D available on any size up to 36"
TDC and Ductmate require 6"
minimum.

We use tierods as a standard SMACNA
reinforcement.

Other methods available upon request

Neoprene gasket standard for 2" s.p.
and
below.



Butyl gasket standard for 3" s.p. and
above
upon request.

We use Johns Manville and Certaineed
Toughguard R Duct Liner / 1.5#
density
1/2" thru 2" available.

*Other products available upon request.

Oval Duct & Fittings Capabilities

Galvanized Metal

Gauges	26-18	20-10
Welding Capabilities	Seam / Tack	Solid / Tack
End Connections		
Black Iron Angle Rings	YES	YES
Galvanized Angle Rings	YES	YES
Ovalmate Rings up to 16 Ga.	YES	NO
Raw both ends w/oval couplers	YES	YES

ASTM-A-653-96

* Material Available
 26 Ga. Thru 16 Ga. / 5' coil
 14 Ga. Thru 12 Ga. /4' Sheet
 Stock

* Continuous runs available upon request

* Call on specialty items

Oval pipe and fittings also available in:

Paintlock 24 Ga. Minimum

Stainless Steel 24 Ga. Minimum

Black Iron 16 Ga. Minimum

Aluminum, call for details

End connections also available in specialty metals call for details.



China Cap 2900

Fabricated from Galvanized Steel meeting ASTM-A-653-96 standards



Size	Ga	Part #
6"	26	CC-06
8"	26	CC-08
10"	26	CC-10
12"	26	CC-12
14"	26	CC-14
16"	26	CC-16
18"	26	CC-18